

# Rocky Corner

homes@rockycorner.org

## Cohousing basics

- Private home
- Common house and other shared facilities
- Access to 33 acre property
- Pedestrian center
- Management and maintenance by the residents
- Egalitarian governance model, with equal access to power in decision-making

## Rocky Corner amenities

- 4,500 sq. ft. common house with commercial kitchen, workshop, lounge with large, handbuilt masonry stove, multipurpose rooms
- Nearby parking for one vehicle, additional parking for a second vehicle
- Community garden with individual allotments
- Ponds, rain gardens, and other permaculture features that we'll develop over time
- Opportunity to participate in organic farm, including your own farm enterprise if you're interested

## Energy-saving features

- Energy Star rated home
- Insulated slab-on-grade with shallow frost wall
- Tight envelope with insulation that exceeds code requirements
- Double-glazed windows
- Large south-facing windows to allow solar gain in winter, shaded in summer
- Efficient air-sourced heat pump to provide ductless heating and cooling
- Skylights and LED fixtures minimize energy consumption for lighting
- Solar-ready roof
- Optional masonry stove for efficient wood heat

## Three-bedroom "C" model

1,160 sq. feet (base design)

Household income level (affordable applicants)	Base Price
Less than 60% of area median income	\$178,000
60%–80% of area median income	\$224,000
80%–100% of area median income	\$310,000
<b>Market rate</b>	<b>\$479,000</b>

## Available Options

Available Options	Code	Price
North 4 ft overhang	PN4	\$4,713
South half-length porch	PSH8	\$7,098
South full-length porch	PSF8	\$11,116
North half-length porch	PNH8	\$9,596
North full-length porch	PNF8	\$14,950
Window bay*	WB	\$10,800
Windows centered on end wall (living room side)*	WND	\$5,310
Add window on 2nd floor*	DSF	\$2,908
Windows centered on end wall (bedroom side)*	WNDB	\$7,056
Add two loft skylights (roof windows)	LSK	\$4,960
Second floor bathroom skylights	BSK	\$2,139
South half-length dormer	DSH	\$11,822
South full-length dormer	DSF	\$29,207
North half-length dormer	DNH	\$19,591
First floor study (in lieu of one bedroom)	ST	\$100
Additional first floor half bath	WC	\$7,303
Infill cathedral ceiling (no dormer)	INF	\$9,470

\* Availability depends on location of home.

## Notes

- Base price includes standard materials, cabinets, fixtures and finishes. Buyer may elect upgrades offered by the builder or may supply certain items instead of seller's supplying them. Some restrictions apply.
- Buyer is responsible for furnishing Energy Star rated appliances, but buyers may elect to cooperate on bulk purchases. No gas appliances are permitted inside the home.
- Number of bedrooms is fixed (two, three, or four, depending on specific home) and cannot be changed by the addition of options.
- See reverse for floor plan and dimensions. Plan may be reversed left-to-right, depending on location of home on the site.

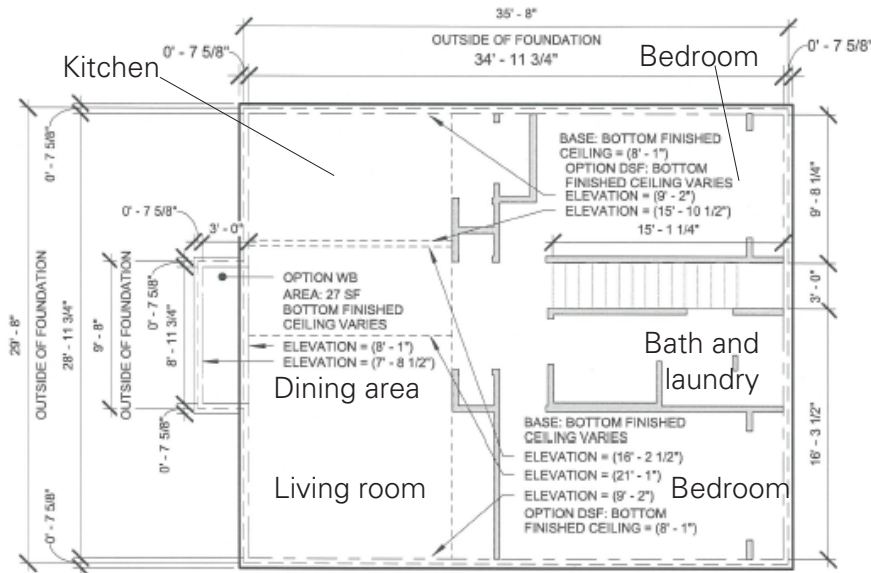
## OPTION DESCRIPTIONS

(ONLY OPTIONS THAT AFFECT HOME VOLUME LISTED)

WB WINDOW BAY CENTERED ON THE LIVING AREA EXTERIOR WALL  
 DSH SOUTH HALF-LENGTH DORMER  
 DSF SOUTH FULL-LENGTH DORMER  
 DNH NORTH HALF-LENGTH DORMER

## LEGEND

— EXTERIOR FACE OF SHEATHING  
 - - - INTERIOR WALL FINISH  
 - - - OUTSIDE OF FOUNDATION  
 - - - OVERHEAD ELEVATION CHANGE



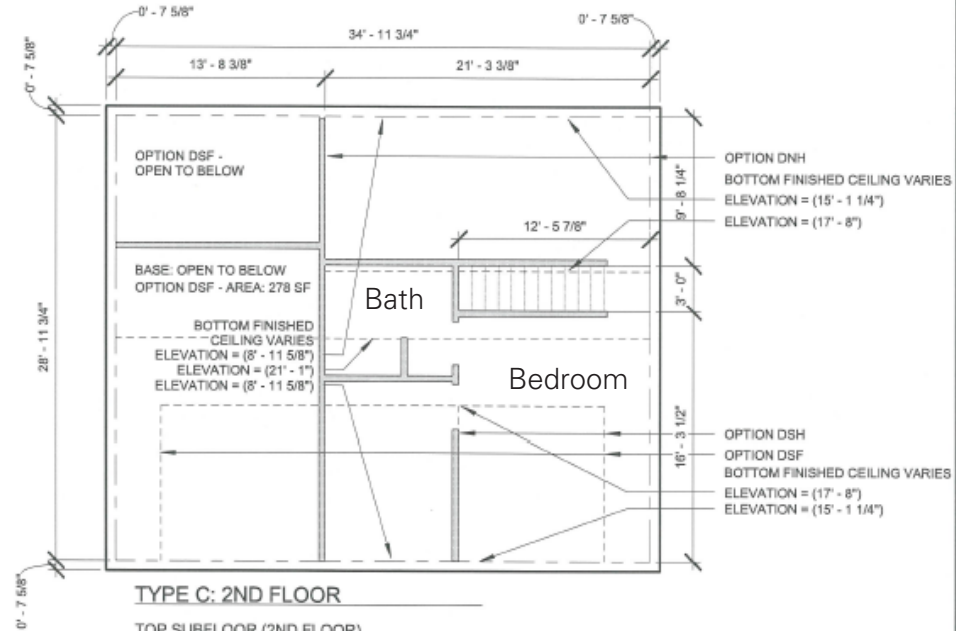
**TYPE C: 1ST FLOOR**

TOP SUBFLOOR (1ST FLOOR)  
 ELEVATION = (0' - 0")

BOTTOM FINISHED CEILING (1ST FLOOR)  
 ELEVATION = (8' - 1")

1ST FLOOR STAIRWAY AREA = 45SF  
 1ST FLOOR AREA W/O STAIR = 968 SF  
 ENTIRE 1ST FLOOR AREA = 1013 SF

OPTION WB = +27 SF



**TYPE C: 2ND FLOOR**

TOP SUBFLOOR (2ND FLOOR)  
 ELEVATION = (8' - 11 5/8")

BOTTOM FINISHED CEILING (2ND FLOOR)  
 ELEVATION = VARIES

2ND FLOOR STAIRWAY AREA = 37 SF  
 2ND FLOOR AREA W/O STAIR = 579 SF  
 ENTIRE 2ND FLOOR AREA = 616 SF

OPTION DSH = +278 SF



## Disclaimer

Buildings and improvements shown NEED NOT BE BUILT. This descriptive brochure is not an offer to sell a home. Please refer to the public offering statement.

## Accessibility and aging in place

Universal design principles are applied throughout:

- Homes and common house have grade-level entrances
- Paths are laid out with wheelchair-friendly slopes
- Doorways and room layouts accommodate wheelchairs
- Stairs can accommodate a chair lift
- All homes have a bedroom and a bath with a roll-in shower and laundry hookups on first floor
- Bath has blocking to accommodate grab bars



EQUAL HOUSING  
 OPPORTUNITY